

# MONTHLY MEMBERSHIP PROGRESS REPORT

LOCATION ARKANSAS

District 7 I

Results as of: 1/31/2022

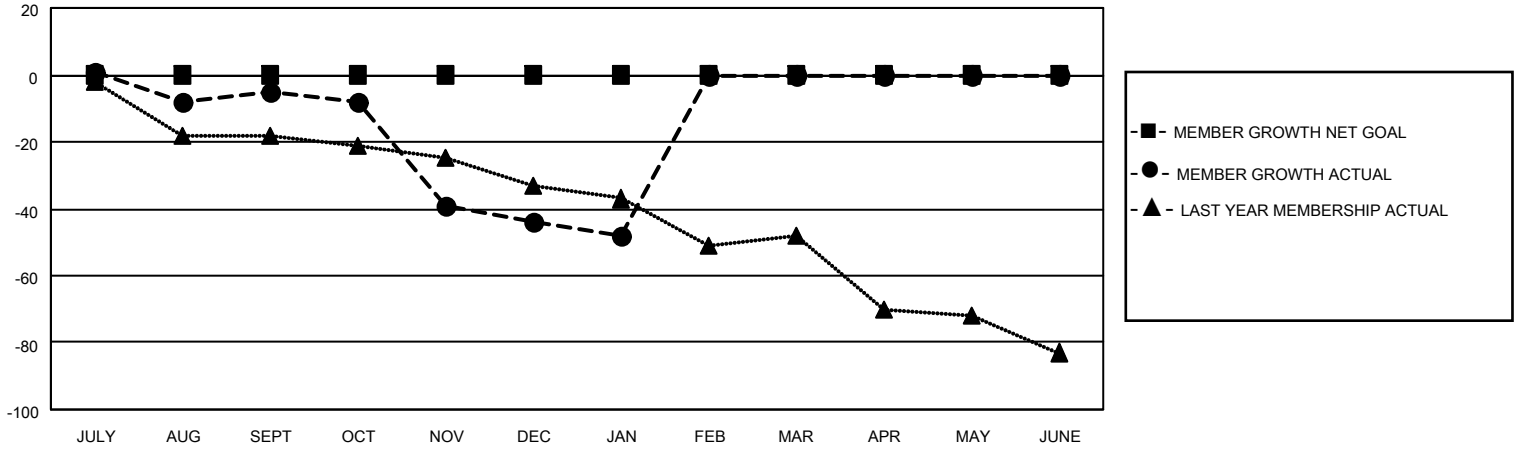
Clubs			
RESULTS FOR 2021-2022			
QUARTER	NEW CLUB GOAL	NEW CLUBS	DROPPED CLUBS
JULY/AUG/SEPT	0	0	0
OCT/NOV/DEC	0	0	1
JAN/FEB/MAR	0	0	0
APR/MAY/JUNE	0	0	0

Members			
RESULTS FOR 2021-2022			
QUARTER	MEMBER GROWTH NET GOAL	MEMBER GROWTH ACTUAL	DROPPED MEMBERS ACTUAL (including transfers)
JULY/AUG/SEPT	0	22	21
OCT/NOV/DEC	0	15	49
JAN/FEB/MAR	0	4	7
APR/MAY/JUNE	0	0	0

**GOALS AND ACTUAL NEW CLUBS CUMULATIVE**



**GOALS AND ACTUAL MEMBERS CUMULATIVE**



<b>DROPPED CLUBS: 1</b>	16 CLUBS OF 31 ADDED 1 OR MORE NEW MEMBERS	<p style="text-align: center;"><u>GENDER DISTRIBUTION</u></p> MALE 400 (67.00%) FEMALE 197 (33.00%) NON BINARY 0 (0.00%) PREFER NOT TO ANSWER 0 (0.00%)
<p style="text-align: center;"><u>DROPPED MEMBERS</u></p> DECEASED 5 CLUB CANCELLED 0 OTHER 72 <hr/> TOTAL 77	<a href="#">CLICK HERE FOR CUMULATIVE MEMBERSHIP DATA</a>	TOTAL FAMILY UNIT MEMBERS 67  FAMILY MEMBERS PAYING HALF DUES 34